



Chippewa County Department of Public Health

711 N. Bridge Street • Room 222 • Chippewa Falls, WI 54729 • (715) 726-7900
1-800-400-3678 (Rural) • FAX (715) 726-7910

Dear Parent:

Head lice have been discovered in your child's school/day care. Here are some facts about preventing the spread of head lice you need to know:

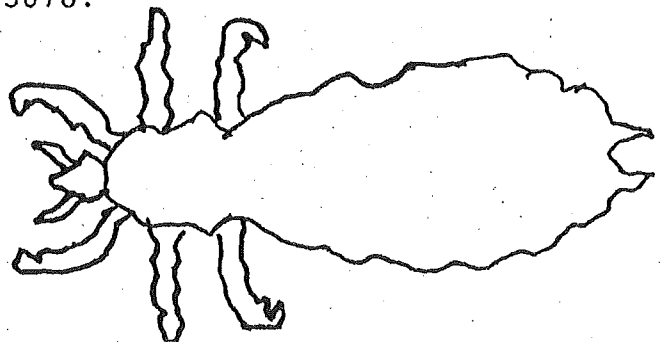
1. Anyone can get head lice so check your child's head on weekly basis.
2. Head lice are small grayish-white wingless bugs, about the size of a sesame seed or small ant, and are found on the hairs of the head.
3. Head lice can live up to 48 hours off the body.
4. Head lice lay oval, whitish eggs (nits) which attach to the hair shaft with a gluey substance. Nits should not be confused with dandruff which is flaky. Nits can be found anywhere on the hair.
5. The eggs of head lice hatch in about a week. Head lice are able to lay eggs after about two weeks.
6. Symptoms of head lice are itching and scratching of the scalp, often along with a rash. Swollen glands in the neck or under the arms may occur in severe cases.
7. Head lice cannot hop, jump or fly; they fall and crawl. They are passed along by close contact with persons who have head lice or with things they are using and have become infested, such as, hats, scarves, ribbons, coats, brushes, combs, pillows, backs of chairs, and car seats.
8. Lice of other animals do not infest man. Head lice do not live on dogs, gerbils, or other pets and animals.
9. Head lice do not transmit diseases (body lice do).
10. Head lice are not dislodged by water, regular shampooing or hair drying.

WHEN CHECKING FOR HEAD LICE:

- * Use a well-lighted spot when checking your child's head for head lice.
- * Comb out tangles in the hair before checking for lice.
- * Separate the hair into sections.
- * Go through the hair carefully looking for lice or lice eggs(nits).
- * Using a magnifying glass can be helpful if you have one.
- * Make sure to look closely around the neck and behind the ears.
- * If you are not sure about how to look for lice or nits, ask someone who knows how to check you child, such as the school nurse.
- * If you see lice or nits contact your health care provider or the Department of Public Health to ask about treatment options.

If you discover your child has head lice, PLEASE ALERT THE SCHOOL/DAY CARE to help control any outbreak from occurring or spreading. If you have questions, please contact the school/day care or Chippewa County Department of Public Health at 726-7900 or 1-800-400-3678.

Sincerely, *Carol Meagher RN*
Your Public Health/School Nurse



EQUAL OPPORTUNITY SERVICE
PUBLIC HEALTH • HOME CARE • WIC • FOR U

If you find a child in your family with head lice and would like help, follow these steps:

1. Obtain an effective insecticide shampoo. You may contact your physician for an insecticide prescription shampoo. There are also insecticide shampoos available without prescription from the drug store.
2. Remove all your child's clothing.
3. Shampoo the hair according to the directions on the label of the shampoo used. Read the label carefully.
4. After shampooing and rinsing the hair as recommended, comb well with a fine-tooth comb to get rid of any loosened nits.
5. Have your child put on clean clothing after shampooing.
6. Launder all clothing and bedding in very hot water. (131°F, for 20 minutes). Dry them at high heat for at least 20 minutes will also destroy nits.
7. Nonwashable items may be dry-cleaned or disinfected by sealing them in a plastic bag for 14 days. Freezing for 24 hours at 14°F will destroy nits and lice.
8. Soak combs and brushes for one hour in a 2% Lysol solution or in one of the insecticide shampoos. They may also be heated in a container of water to about 150°F for 5-10 minutes. (CAUTION: heating may damage the comb or brush.)
9. The backs of upholstered furniture, car seats, and carpets, etc., should be thoroughly vacuumed.
10. Keep your child home from school until he or she had had one shampoo procedure of an effective insecticide shampoo. Repeat the shampoo according to the directions on label.
11. Other family members should be examined for head lice. Other family members should be treated **ONLY** if infested.